

Park Meadows Marketing Map

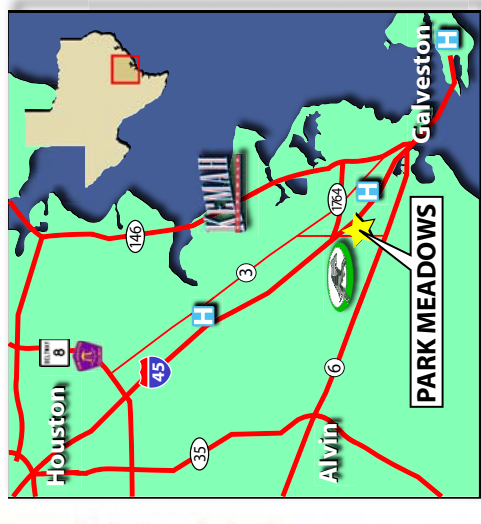
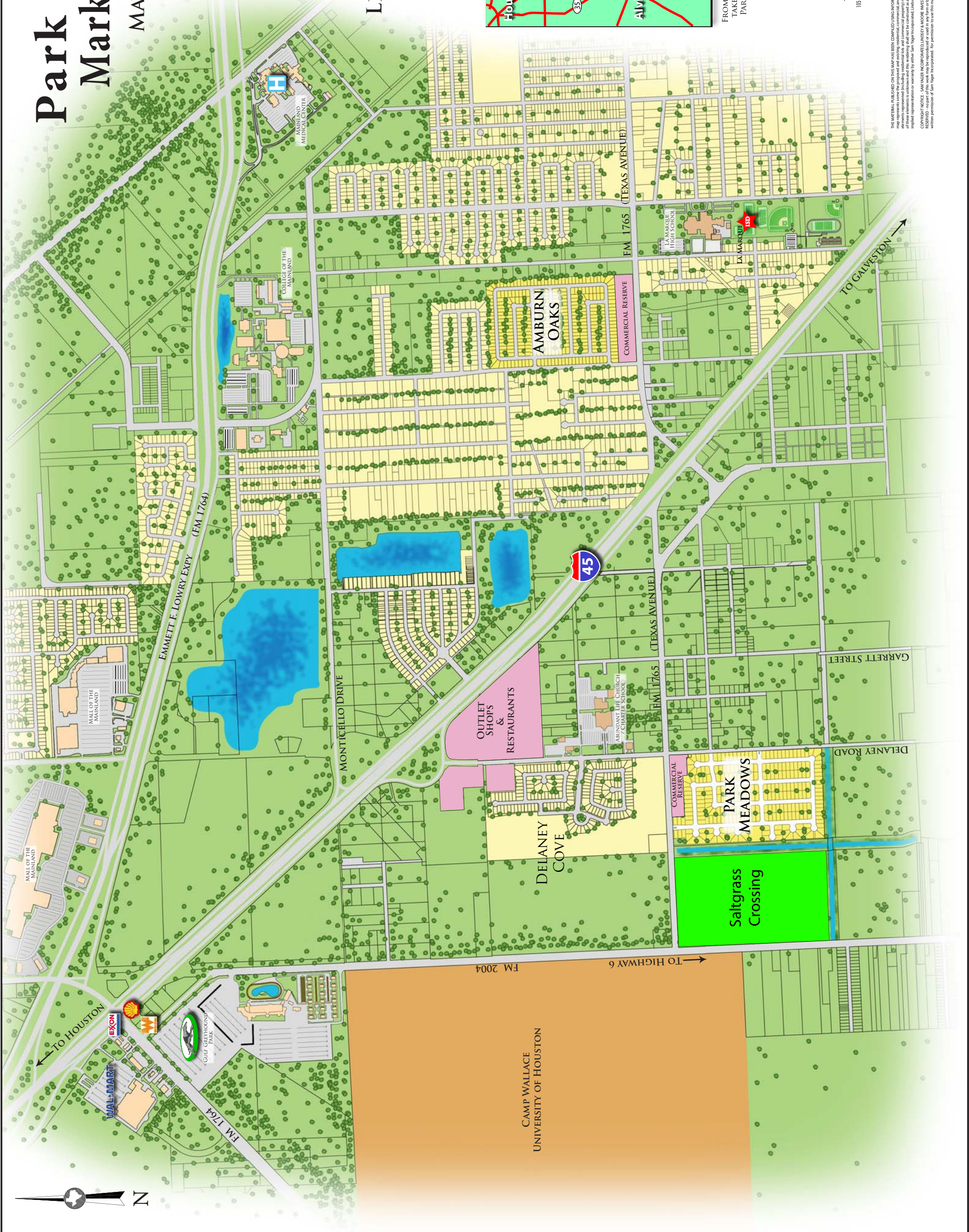
MAY 30TH, 2007

OWNED BY:

**DELANEY 1765
REALTY, L.P.**

MANAGED BY:

**LINDSEY AND MOORE
INVESTMENT, LLC.**



FROM I-45 SOUTHBOUND, EXIT DELANEY RD. (EXIT# 13),
TAKE A RIGHT ON DELANEY RD. AND DRIVE 0.3 MILES.
PARK MEADOWS IS ON THE SOUTHWEST CORNER OF
DELANEY RD. AND FM 1765.

PREPARED BY:



**Edminister · Hinschaw · Russ
and Associates**

civil engineering · site planning · landscape architecture · construction management
10555 westliffe drive houston, texas 77042 1-713-784-4500 1-713-784-4577 www.ehrarc.com

THE MATERIAL PUBLISHED ON THIS MAP HAS BEEN COMPILED USING INFORMATION FROM THIRD PARTY SOURCES. SOURCE DATA IS UNGUARANTEED. THE INFORMATION ON THIS MAP REPRESENTS SOME OF THE PROPOSED AND EXISTING RESIDENTIAL, COMMERCIAL AND INDUSTRIAL DEVELOPMENTS IN AND AROUND THE PARK MEADOWS DEVELOPMENT. THE ACTUAL CONSTRUCTION LOCATION OR SIZE OF ANY DEVELOPMENT IS SUBJECT TO CHANGE WITHOUT NOTICE. THE INFORMATION ON THIS MAP IS NOT TO BE USED AS A BASIS FOR ANY INVESTMENT OR FINANCIAL DECISION. NO WARRANTIES, EXPRESS OR IMPLIED, ARE MADE BY EITHER EDMINISTER-HINSCHAW-RUSS AND ASSOCIATES OR ANY OF ITS AFFILIATES. COPYRIGHT NOTICE - SAM WAGER INCORPORATED, LINDSEY AND MOORE INVESTMENTS - REPRODUCTION OF THIS MAP WITHOUT PERMISSION SHALL BE DEEMED A VIOLATION OF FEDERAL COPYRIGHT LAWS. ALL RIGHTS RESERVED - NO PART OF THIS WORK MAY BE REPRODUCED OR USED IN ANY FORM OR BY ANY MEANS - GRAPHIC, ELECTRONIC OR MECHANICAL, INCLUDING PHOTOCOPYING, WEB DISTRIBUTION OR INFORMATION STORAGE - WITHOUT THE WRITTEN PERMISSION OF SAM WAGER INCORPORATED. FOR PERMISSION TO USE THIS MATERIAL CONTACT SAM WAGER INCORPORATED.